

JAPANESE AND KOREAN
VEHICLE SERIES

FOR
NISSAN



OEM No.:NISSAN FE6
Ref No.:14670-Z5607/470-04422

Nominal displacement: 12.8ml/r
Maximus pressure: 120bar
Highest rotational speed: 500-5000r/min
Controlled flow rate: 10.0L/min
Fuel feed hole: Φ14
Fuel discharge hole: M20 × 1.5-6g
Direction of rotation: Right



OEM No.:NISSAN NE6
Ref No.:14570-Z5660 475-04250 475-04345

Nominal displacement: 14.33ml/r
Maximus pressure: 105bar
Highest rotational speed: 500-3200r/min
Controlled flow rate: 12.0L/min
Fuel feed hole: Φ 12
Fuel discharge hole: G3/8-19
Direction of rotation: Right



OEM No.:NISSAN NE6
Ref No.:475-04332/14670-95031
475-04212/14720-95003

Nominal displacement: 14.33ml/r
Maximus pressure: 120bar
Highest rotational speed: 500-3200r/min
Controlled flow rate: 16.0L/min
Fuel feed hole: Φ 12
Fuel discharge hole: G3/8-19
Direction of rotation: Right



OEM No.:NISSAN FE6
Ref No.:14670-Z5572

Nominal displacement: 12.8ml/r
Maximus pressure: 110bar
Highest rotational speed: 500-5000r/min
Controlled flow rate: 10.0L/min
Fuel feed hole: Φ 14
Fuel discharge hole: M20 × 1.5-6g
Direction of rotation: Right



OEM No.:NISSAN PE6
Ref No.:475-03380

Nominal displacement: 13.0ml/r
Maximus pressure: 105bar
Highest rotational speed: 500-3200r/min
Controlled flow rate: 11.0L/min
Fuel feed hole: Φ 12
Fuel discharge hole: 3/4-16UNF
Direction of rotation: Right



OEM No.:
Ref No.:44306-1150B

Nominal displacement: 14.3ml/r
Maximus pressure: 120bar
Highest rotational speed: 500-3600r/min
Controlled flow rate: 16.0L/min
Fuel feed hole: Φ 12
Fuel discharge hole: G3/8-19
Direction of rotation: Right



OEM No.:NISSAN FE6
Ref No.:14670-Z5501

Nominal displacement: 13.0ml/r
Maximus pressure: 120bar
Highest rotational speed: 500-5000r/min
Controlled flow rate: 10.0L/min
Fuel feed hole: Φ 14
Fuel discharge hole: M20 × 1.5
Direction of rotation: Right



OEM No.:NISSAN CW520R/PF6
Ref No.:14670-96264

Nominal displacement: 20.0ml/r
Maximus pressure: 135bar
Highest rotational speed: 500-3600r/min
Controlled flow rate: 18.0L/min
Fuel feed hole: Φ 12
Fuel discharge hole: 3/4-16UNF
Direction of rotation: Right



OEM No.:NISSAN CW520L/RF8
Ref No.:14670-97312/14670-96367

Nominal displacement: 20.0ml/r
Maximus pressure: 130bar
Highest rotational speed: 500-3600r/min
Controlled flow rate: 18.0L/min
Fuel feed hole: Φ 12
Fuel discharge hole: 3/4-16UNF
Direction of rotation: Left



OEM No.:NISSAN FE6 CPB15
Ref No.:14670-Z5560

Nominal displacement: 20.5ml/r
Maximus pressure: 130bar
Highest rotational speed: 500-3200r/min
Controlled flow rate: 16.0L/min
Fuel feed hole: Φ 12
Fuel discharge hole: 3/4-16UNF
Direction of rotation: Right



OEM No.:NISSAN
Ref No.:14670-96364

Nominal displacement: 2 × 15.8ml/r
Maximus pressure: 125bar
Highest rotational speed: 625-3600r/min
Controlled flow rate: 18.0L/min
Fuel feed hole: Φ 30
Fuel discharge hole: 3/4-16UNF-2B
Direction of rotation: Left



OEM No.:NISSAN CW54R/PE6
Ref No.:14670-96063

Nominal displacement: 20.0ml/r
Maximus pressure: 135bar
Highest rotational speed: 500-3600r/min
Controlled flow rate: 18.0L/min
Fuel feed hole: Φ 12
Fuel discharge hole: 3/4-16UNF
Direction of rotation: Right



OEM No.:NISSAN CW54L/RF8
Ref No.:14670-97178/475-97361

Nominal displacement: 20.0ml/r
Maximus pressure: 135bar
Highest rotational speed: 500-3600r/min
Controlled flow rate: 18.0L/min
Fuel feed hole: Φ 12
Fuel discharge hole: 3/4-16UNF
Direction of rotation: Left



OEM No.:NISSAN QF163
Ref No.:RE8 CW52/CW53 14670-97178JP

Nominal displacement: 20.0ml/r
Maximus pressure: 135bar
Highest rotational speed: 500-3600r/min
Controlled flow rate: 18.0L/min
Fuel feed hole: Φ 12
Fuel discharge hole: 3/4-16UNF-2B
Direction of rotation: Left



OEM No.:NISSAN
Ref No.:

Nominal displacement: 18.0ml/r
Maximus pressure: 135bar
Highest rotational speed: 500-3200r/min
Controlled flow rate: 18.0L/min
Fuel feed hole: Φ 15
Fuel discharge hole: 3/4-16UNF
Direction of rotation: Right



OEM No.:
Ref No.:475-97163

Nominal displacement: 13.2ml/r
Maximus pressure: 105bar
Highest rotational speed: 500-3200r/min
Controlled flow rate: 13.0L/min
Fuel feed hole: Φ 12
Fuel discharge hole: 3/4-16UNF
Direction of rotation: Left



OEM No.:
Ref No.:475-97163

Nominal displacement: 13.2ml/r
Maximus pressure: 105bar
Highest rotational speed: 500-3200r/min
Controlled flow rate: 13.0L/min
Fuel feed hole: Φ 12
Fuel discharge hole: 3/4-16UNF
Direction of rotation: Right

INDIA VEHICLE SERIES

FOR
TATA



OEM NO.:TATA WORLD TRUCK
Ref No.:7685 955 109

Nominal displacement: 25.0ml/r
Maximus pressure: 150bar
Highest rotational speed: 500-3500r/min
Controlled flow rate: 25.0L/min
Fuel feed hole: M26 × 1.5
Fuel discharge hole: M16 × 1.5
Direction of rotation: Right



OEM NO.:TATA WORLD TRUCK
Ref No.:7679 955 902

Nominal displacement: 28.0ml/r
Maximus pressure: 165bar
Highest rotational speed: 500-3000r/min
Controlled flow rate: 25.0L/min
Fuel feed hole: M26 × 1.5
Fuel discharge hole: M18 × 1.5
Direction of rotation: Left



OEM NO.:TATA WORLD TRUCK
Ref No.:2885 4660 0104

Nominal displacement: 21.0ml/r
Maximus pressure: 180bar
Highest rotational speed: 500-3600r/min
Controlled flow rate: 16.0L/min
Fuel feed hole: M26 × 1.5
Fuel discharge hole: M18 × 1.5
Direction of rotation: Left



OEM No.:ID 200714
Ref No.:TATA

Nominal displacement: 16.0ml/r
Maximus pressure: 130bar
Highest rotational speed: 500-4500r/min
Controlled flow rate: 16.0L/min
Fuel feed hole: M26 × 1.5
Fuel discharge hole: M18 × 1.5
Direction of rotation: Left



OEM No.:
Ref No.:TATA LCV 2641 4680 0143

Nominal displacement: 14.0ml/r
Maximus pressure: 100bar
Highest rotational speed: 500-4000r/min
Controlled flow rate: 9.0L/min
Fuel feed hole: M26 × 1.5
Fuel discharge hole: M16 × 1.5
Direction of rotation: Right



OEM No.:
Ref No.:2770 4600 0109

Nominal displacement: 15.77ml/r
Maximus pressure: 120bar
Highest rotational speed: 500-3000r/min
Controlled flow rate: 12.0L/min
Fuel feed hole: M26 × 1.5
Fuel discharge hole: M16 × 1.5
Direction of rotation: Right



OEM No.:TATA
Ref No.:CUMMINS 6BT

Nominal displacement: 14.5ml/r
Maximus pressure: 120bar
Highest rotational speed: 500-3600r/min
Controlled flow rate: 12.0L/min
Fuel feed hole: M26 × 1.5
Fuel discharge hole: M16 × 1.5
Direction of rotation: Right



OEM No.:ASHOK LEYLAND
Ref No.:ZF 7685 955 104

Nominal displacement: 20.0ml/r
Maximus pressure: 150bar
Highest rotational speed: 500-3600r/min
Controlled flow rate: 16.0L/min
Fuel feed hole: M26 × 1.5
Fuel discharge hole: M16 × 1.5
Direction of rotation: Right



OEM No.:ASHOK LEYLAND
Ref No.:F8809210

Nominal displacement: 15.0ml/r
Maximus pressure: 120bar
Highest rotational speed: 500-3200r/min
Controlled flow rate: 12.0L/min
Fuel feed hole: M26 × 1.5
Fuel discharge hole: M16 × 1.5
Direction of rotation: Right



OEM No.:TATA
Ref No.:ZFINDIA 7672 955 274

Nominal displacement: 14.0ml/r
Maximus pressure: 100bar
Highest rotational speed: 500-3200r/min
Controlled flow rate: 9.0L/min
Fuel feed hole: M26 × 1.5
Fuel discharge hole: M16 × 1.5
Direction of rotation: Right



OEM No.:TATA
Ref No.:ZF 7673 955 304

Nominal displacement: 17.5ml/r
Maximus pressure: 150bar
Highest rotational speed: 600-3200r/min
Controlled flow rate: 14.0L/min
Fuel feed hole: M26 × 1.5
Fuel discharge hole: M18 × 1.5
Direction of rotation: Left



OEM No.:ASHOK LEYLAND
Ref No.:F8802040

Nominal displacement: 25.0ml/r
Maximus pressure: 165bar
Highest rotational speed: 500-3600r/min
Controlled flow rate: 25.0L/min
Fuel feed hole: M26 × 1.5
Fuel discharge hole: M16 × 1.5
Direction of rotation: Right



OEM No.:
Ref No.:HINO

Nominal displacement: 15.39ml/r
Maximus pressure: 000bar
Highest rotational speed: 500-3600r/min
Controlled flow rate: 12.0L/min
Fuel feed hole: M26 × 1.5
Fuel discharge hole: M16 × 1.5
Direction of rotation: Left



OEM No.:TATA
Ref No.:ZF 7673 955 802

Nominal displacement: 18.0ml/r
Maximus pressure: 000bar
Highest rotational speed: 600-3600r/min
Controlled flow rate: 14.0L/min
Fuel feed hole: M26 × 1.5
Fuel discharge hole: M18 × 1.5
Direction of rotation: Left



OEM No.:TATA LPK 407
Ref No.:ZF 7613 955 138

Nominal displacement: 8.5ml/r
Maximus pressure: 100bar
Highest rotational speed: 500-7000r/min
Controlled flow rate: 9.0L/min
Fuel feed hole: Φ 17.3
Fuel discharge hole: M16 × 1.5
Direction of rotation: Right



OEM No.:AL F8320900
Ref No.:

Nominal displacement: 15.39ml/r
Maximus pressure: 105bar
Highest rotational speed: 500-3600r/min
Controlled flow rate: 10.0L/min
Fuel feed hole: M26 × 1.5
Fuel discharge hole: M16 × 1.5
Direction of rotation: Left



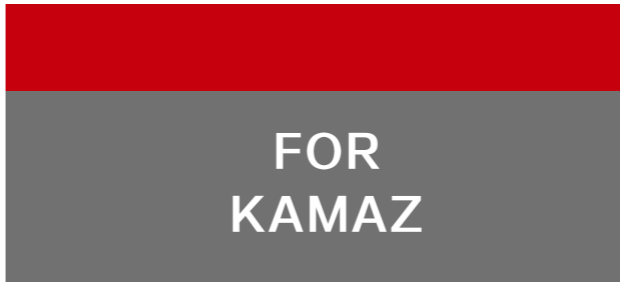
OEM No.:
Ref No.:TATA SUMO 2823 4660 0112

Nominal displacement: 9.6ml/r
Maximus pressure: 70bar
Highest rotational speed: 500-8000r/min
Controlled flow rate: 7.0L/min
Fuel feed hole: Φ 14
Fuel discharge hole: M16 × 1.5
Direction of rotation: Right



OEM NO.:TATA WORLD TRUCK
Ref No.:ZF 7673 955 903

Nominal displacement: 28.0ml/r
Maximus pressure: 165bar
Highest rotational speed: 500-3000r/min
Controlled flow rate: 25.0L/min
Fuel feed hole: M26 × 1.5
Fuel discharge hole: M18 × 1.5
Direction of rotation: Right



OEM No.:KAMAZ
Ref No.:4310-3407200

Nominal displacement: 16.0ml/r
Maximus pressure: 100bar
Highest rotational speed: 500-3600r/min
Controlled flow rate: 12.0L/min
Fuel feed hole: M24 × 1.5
Fuel discharge hole: M16 × 1.5
Direction of rotation: Left



OEM NO.:TATA WORLD TRUCK
Ref No.:ZF 7685 955 201

Nominal displacement: 21.0ml/r
Maximus pressure: 180bar
Highest rotational speed: 500-3500r/min
Controlled flow rate: 16.0L/min
Fuel feed hole: M26 × 1.5
Fuel discharge hole: M18 × 1.5
Direction of rotation: Right



OEM No.:TATAINDICA 2818 4660 0104
Ref No.:ZF 7690 955 412

Nominal displacement: 7.2ml/r
Maximus pressure: 70bar
Highest rotational speed: 500-8000r/min
Controlled flow rate: 7.0L/min
Fuel feed hole: Φ 17.5
Fuel discharge hole: M14 × 1.5
Direction of rotation: Right



OEM No.:7685 955 138
Ref No.:KAMAZ

Nominal displacement: 21.0ml/r
Maximus pressure: 160bar
Highest rotational speed: 500-3600r/min
Controlled flow rate: 16.0L/min
Fuel feed hole: M26 × 1.5
Fuel discharge hole: M18 × 1.5
Direction of rotation: Left



OEM No.:ZIL
Ref No.:TN7-256b-3407199

Nominal displacement: 16.0ml/r
Maximus pressure: 100bar
Highest rotational speed: 500-3200r/min
Controlled flow rate: 15.0L/min
Fuel feed hole: Φ 18
Fuel discharge hole: M16 × 1.5
Direction of rotation: Right

INDIA VEHICLE SERIES

FOR

ASHOK LEYLAND



OEM No.:ASHOK LEYLAND
Ref No.:2632 4660 0111

Nominal displacement: 15.0ml/r
Maximus pressure: 120bar
Highest rotational speed: 500-3000r/min
Controlled flow rate: 12.0L/min
Fuel feed hole: M26 × 1.5
Fuel discharge hole: M18 × 1.5
Direction of rotation: Right



OEM No.:ZIL
Ref No.:130-3407199

Nominal displacement: 15.77ml/r
Maximus pressure: 80bar
Highest rotational speed: 500-3600r/min
Controlled flow rate: 20.0L/min
Fuel feed hole: Φ 18
Fuel discharge hole: M16 × 1.5
Direction of rotation: Right



OEM No.:ZIL
Ref No.:256b-3407199-01

Nominal displacement: 15.77ml/r
Maximus pressure: 80bar
Highest rotational speed: 500-3600r/min
Controlled flow rate: 20.0L/min
Fuel feed hole: Φ 18
Fuel discharge hole: M16 × 1.5
Direction of rotation: Right



OEM No.:130-3407200A
Ref No.:66-3407010

Nominal displacement: 15.77ml/r
Maximus pressure: 70bar
Highest rotational speed: 500-4800r/min
Controlled flow rate: 15.0L/min
Fuel feed hole: Φ 11.3
Fuel discharge hole: M16 \times 1.5
Direction of rotation: Right



OEM No.:WD615-67
Ref No.:



Nominal displacement: 18.0ml/r
Maximus pressure: 130bar
Highest rotational speed: 500-3600r/min
Controlled flow rate: 18.0L/min
Fuel feed hole: M26 \times 1.5
Fuel discharge hole: M18 \times 1.5
Direction of rotation: Right



OEM No.:WD615-67 STR6105
Ref No.:612600130266

Nominal displacement: 15.77ml/r
Maximus pressure: 15.0bar
Highest rotational speed: 500-3900r/min
Controlled flow rate: 20.0L/min
Fuel feed hole: M26 \times 1.5
Fuel discharge hole: M18 \times 1.5
Direction of rotation: Right



OEM No.:WD615-67 STR6105
Ref No.:612600130266

Nominal displacement: 15.77ml/r
Maximus pressure: 13.0bar
Highest rotational speed: 500-3900r/min
Controlled flow rate: 18.0L/min
Fuel feed hole: M26 \times 1.5
Fuel discharge hole: M18 \times 1.5
Direction of rotation: Right

FOR
CNHTC 中国重汽



OEM No.:WD615-67 STR6105
Ref No.:612600130168

Nominal displacement: 22.0ml/r
Maximus pressure: 13.0bar
Highest rotational speed: 500-3900r/min
Controlled flow rate: 25.0L/min
Fuel feed hole: M26 \times 1.5
Fuel discharge hole: M18 \times 1.5
Direction of rotation: Right



OEM No.:WD615-67 STR6105
Ref No.:612600130172

Nominal displacement: 20.0ml/r
Maximus pressure: 15.0bar
Highest rotational speed: 500-3900r/min
Controlled flow rate: 22.0L/min
Fuel feed hole: M26 \times 1.5
Fuel discharge hole: M18 \times 1.5
Direction of rotation: Right



OEM No.:WD615-67 STR6105
Ref No.:61500130037

Nominal displacement: 15.77ml/r
Maximus pressure: 13.0bar
Highest rotational speed: 500-3900r/min
Controlled flow rate: 16.0L/min
Fuel feed hole: M26 \times 1.5
Fuel discharge hole: M18 \times 1.5
Direction of rotation: Right



OEM No.:WD615-67 STR6105
Ref No.:612600130055

Nominal displacement: 15.77ml/r
Maximus pressure: 15.0bar
Highest rotational speed: 500-3900r/min
Controlled flow rate: 16.0L/min
Fuel feed hole: M26 \times 1.5
Fuel discharge hole: M18 \times 1.5
Direction of rotation: Right



OEM No.:WD615-67 STR6105
Ref No.:612600130076

Nominal displacement: 18.0ml/r
Maximus pressure: 15.0bar
Highest rotational speed: 500-3900r/min
Controlled flow rate: 20.0L/min
Fuel feed hole: M26 \times 1.5
Fuel discharge hole: M18 \times 1.5
Direction of rotation: Right



OEM No.:WD615-67 STR6105
Ref No.:612600130101

Nominal displacement: 15.77ml/r
Maximus pressure: 13.0bar
Highest rotational speed: 500-3900r/min
Controlled flow rate: 16.0L/min
Fuel feed hole: M26 \times 1.5
Fuel discharge hole: M18 \times 1.5
Direction of rotation: Right



OEM No.:D12
Ref No.:612600130265

Nominal displacement: 22.0ml/r
Maximus pressure: 15.0bar
Highest rotational speed: 500-3900r/min
Controlled flow rate: 25.0L/min
Fuel feed hole: M26 \times 1.5
Fuel discharge hole: M18 \times 1.5
Direction of rotation: Right



OEM No.:D12
Ref No.:612600130149

Nominal displacement: 20.0ml/r
Maximus pressure: 15.0bar
Highest rotational speed: 500-3900r/min
Controlled flow rate: 22.0L/min
Fuel feed hole: M26 \times 1.5
Fuel discharge hole: M18 \times 1.5
Direction of rotation: Right



OEM No.:D12
Ref No.:612600130225

Nominal displacement: 15.77ml/r
Maximus pressure: 15.0bar
Highest rotational speed: 500-3900r/min
Controlled flow rate: 18.0L/min
Fuel feed hole: M26 \times 1.5
Fuel discharge hole: M18 \times 1.5
Direction of rotation: Right



OEM No.:D12
Ref No.:61800130034

Nominal displacement: 15.77ml/r
Maximus pressure: 15.0bar
Highest rotational speed: 500-3900r/min
Controlled flow rate: 16.0L/min
Fuel feed hole: M26 \times 1.5
Fuel discharge hole: M18 \times 1.5
Direction of rotation: Right

OEM No.:WD615-67
Ref No.:7673 955 280



Nominal displacement: 18.0ml/r
Maximus pressure: 130bar
Highest rotational speed: 500-3600r/min
Controlled flow rate: 16.0L/min
Fuel feed hole: M26 \times 1.5
Fuel discharge hole: M18 \times 1.5
Direction of rotation: Right



OEM No.:HOWO WG9719 4700 37/2
Ref No.:

Nominal displacement: 18.0ml/r
Maximus pressure: 160bar
Highest rotational speed: 500-3200r/min
Controlled flow rate: 20.0L/min
Fuel feed hole: M26 \times 1.5
Fuel discharge hole: M18 \times 1.5
Direction of rotation: Right

OEM No.:WG 9725 478 037
Ref No.:ZF 7679 955 603



Nominal displacement: 21.0ml/r
Maximus pressure: 180bar
Highest rotational speed: 500-4000r/min
Controlled flow rate: 20.0L/min
Fuel feed hole: M26 \times 1.5
Fuel discharge hole: M18 \times 1.5
Direction of rotation: Right



OEM No.:WG 9619 470 080
Ref No.:ZF 7684 955 608

Nominal displacement: 17.0ml/r
Maximus pressure: 180bar
Highest rotational speed: 500-3600r/min
Controlled flow rate: 16.0L/min
Fuel feed hole: M26 \times 1.5
Fuel discharge hole: M18 \times 1.5
Direction of rotation: Right

OEM No.:WP12
Ref No.:ZF 7679 955 302



Nominal displacement: 17.0ml/r
Maximus pressure: 140bar
Highest rotational speed: 500-4000r/min
Controlled flow rate: 16.0L/min
Fuel feed hole: M26 \times 1.5
Fuel discharge hole: M18 \times 1.5
Direction of rotation: Right



OEM No.:6126 3003 0005
Ref No.:ZF 7679 955 306

Nominal displacement: 17.0ml/r
Maximus pressure: 180bar
Highest rotational speed: 500-4000r/min
Controlled flow rate: 16.0L/min
Fuel feed hole: M26 \times 1.5
Fuel discharge hole: M18 \times 1.5
Direction of rotation: Right

OEM No.:6126 3003 0087
Ref No.:



Nominal displacement: 17.0ml/r
Maximus pressure: 130bar
Highest rotational speed: 500-4000r/min
Controlled flow rate: 18.0L/min
Fuel feed hole: M26 \times 1.5
Fuel discharge hole: M18 \times 1.5
Direction of rotation: Right



OEM No.:WD615-67 STR6105
Ref No.:ZF 7679 955 306

Nominal displacement: 20.0ml/r
Maximus pressure: 14.5bar
Highest rotational speed: 500-3900r/min
Controlled flow rate: 22.0L/min
Fuel feed hole: M26 \times 1.5
Fuel discharge hole: M18 \times 1.5
Direction of rotation: Right



OEM No.:WD615-67 6P1252Q、6105
Ref No.:612600130517

Nominal displacement: 22.0ml/r
Maximus pressure: 15.0bar
Highest rotational speed: 500-3900r/min
Controlled flow rate: 25.0L/min
Fuel feed hole: M26 × 1.5
Fuel discharge hole: M18 × 1.5
Direction of rotation: Right



OEM No.:WD615-67、6P125ZQ、6105
Ref No.:612600130518

Nominal displacement: 16.0ml/r
Maximus pressure: 13.0bar
Highest rotational speed: 500-3900r/min
Controlled flow rate: 18.0L/min
Fuel feed hole: M26 × 1.5
Fuel discharge hole: M18 × 1.5
Direction of rotation: Right



OEM No.:WD615-67、6P125ZQ、6105
Ref No.:612600130522

Nominal displacement: 18.0ml/r
Maximus pressure: 13.0bar
Highest rotational speed: 500-3900r/min
Controlled flow rate: 20.0L/min
Fuel feed hole: M26 × 1.5
Fuel discharge hole: M18 × 1.5
Direction of rotation: Right



OEM No.:WD615-67、6P125ZQ、6105
Ref No.:612600130523

Nominal displacement: 20.0ml/r
Maximus pressure: 15.0bar
Highest rotational speed: 500-3900r/min
Controlled flow rate: 22.0L/min
Fuel feed hole: M26 × 1.5
Fuel discharge hole: M18 × 1.5
Direction of rotation: Right



OEM No.:WD615-67、6P125ZQ
Ref No.:QC18/13-STD

Nominal displacement: 16.0ml/r
Maximus pressure: 15.0bar
Highest rotational speed: 3600r/min
Controlled flow rate: 20.0L/min
Fuel feed hole: M26 × 1.5
Fuel discharge hole: M18 × 1.5
Direction of rotation: Right



OEM No.:WP12
Ref No.:612630030294

Nominal displacement: 22.0ml/r
Maximus pressure: 15.0bar
Highest rotational speed: 3900r/min
Controlled flow rate: 20.0L/min
Fuel feed hole: M26 × 1.5
Fuel discharge hole: M18 × 1.5
Direction of rotation: Right



OEM No.:WP12
Ref No.:

Nominal displacement: 18.0ml/r
Maximus pressure: 13.0bar
Highest rotational speed: 3900r/min
Controlled flow rate: 18.0L/min
Fuel feed hole: M26 × 1.5
Fuel discharge hole: M18 × 1.5
Direction of rotation: Right



OEM No.:D12
Ref No.:DZ9100130027

Nominal displacement: 18.0ml/r
Maximus pressure: 15.0bar
Highest rotational speed: 500-3900r/min
Controlled flow rate: 20.0L/min
Fuel feed hole: M26 × 1.5
Fuel discharge hole: M18 × 1.5
Direction of rotation: Right



OEM No.:D12
Ref No.:DZ9100130028

Nominal displacement: 15.77ml/r
Maximus pressure: 13.0bar
Highest rotational speed: 500-3900r/min
Controlled flow rate: 16.0L/min
Fuel feed hole: M26 × 1.5
Fuel discharge hole: M18 × 1.5
Direction of rotation: Right



OEM No.:D12
Ref No.:DZ9100130031

Nominal displacement: 18.0ml/r
Maximus pressure: 13.0bar
Highest rotational speed: 500-3900r/min
Controlled flow rate: 20.0L/min
Fuel feed hole: M26 × 1.5
Fuel discharge hole: M18 × 1.5
Direction of rotation: Right



OEM No.:D12
Ref No.:DZ93319130001

Nominal displacement: 22.0ml/r
Maximus pressure: 15.0bar
Highest rotational speed: 500-3900r/min
Controlled flow rate: 25.0L/min
Fuel feed hole: M26 × 1.5
Fuel discharge hole: M18 × 1.5
Direction of rotation: Right



AMERICAN VEHICLE SERIES



OEM No.:153A
Ref No.:3406G-010-C

Nominal displacement: 16.0ml/r
Maximus pressure: 140bar
Highest rotational speed: 500-3600r/min
Controlled flow rate: 18.0L/min
Fuel feed hole: M30 × 1.5
Fuel discharge hole: M20 × 1.5
Direction of rotation: Right



OEM No.:
Ref No.:ZF 7673 955 286

Nominal displacement: 16.0ml/r
Maximus pressure: 130bar
Highest rotational speed: 600-3200r/min
Controlled flow rate: 20.0L/min
Fuel feed hole: M26 × 1.5
Fuel discharge hole: M18 × 1.5
Direction of rotation: Right



OEM No.:FORD
Ref No.:ZF 7683 975 903

Nominal displacement: 17.00ml/r
Maximus pressure: 000bar
Highest rotational speed: 500-3600r/min
Controlled flow rate: 9.0L/min
Fuel feed hole: Φ19
Fuel discharge hole: 3/4-16UNF-2A
Direction of rotation: Right



OEM No.:International Agrale 4.10
Ref No.:ZF 7684 955 921

Nominal displacement: 15.00ml/r
Maximus pressure: 000bar
Highest rotational speed: 500-3600r/min
Controlled flow rate: 9.0L/min
Fuel feed hole: M26 × 1.5
Fuel discharge hole: M16 × 1.5
Direction of rotation: Left



OEM No.:
Ref No.:ZF 7683 975 900

Nominal displacement: 15.00ml/r
Maximus pressure: 000bar
Highest rotational speed: 500-3600r/min
Controlled flow rate: 11.0L/min
Fuel feed hole: Φ18.2
Fuel discharge hole: 3/4-16UNF-2A
Direction of rotation: Left



OEM No.:AGRALE 7500/8500
Ref No.:ZF 7684 975 914

Nominal displacement: 15.00ml/r
Maximus pressure: 000bar
Highest rotational speed: 500-3600r/min
Controlled flow rate: 10.0L/min
Fuel feed hole: Φ21
Fuel discharge hole: 3/4-16UNF-2A
Direction of rotation: Left



OEM No.:International Agrale 4.10
Ref No.:ZF 7684 975 922

Nominal displacement: 15.00ml/r
Maximus pressure: 000bar
Highest rotational speed: 500-3600r/min
Controlled flow rate: 12.0L/min
Fuel feed hole: Φ21
Fuel discharge hole: 3/4-16UNF
Direction of rotation: Left



OEM No.:FORD B-1618 VOLKS WAGEN
Ref No.:ZF 7685 975 900

Nominal displacement: 21.00ml/r
Maximus pressure: 000bar
Highest rotational speed: 500-3600r/min
Controlled flow rate: 17.0L/min
Fuel feed hole: Φ21
Fuel discharge hole: 3/4-16UNF-2A
Direction of rotation: Left



OEM No.:CUMMINS 6BT
Ref No.:3406A-010-B

Nominal displacement: 15.77ml/r
Maximus pressure: 140bar
Highest rotational speed: 500-3600r/min
Controlled flow rate: 16.0L/min
Fuel feed hole: M30 × 2.0
Fuel discharge hole: M20 × 1.5
Direction of rotation: Right



OEM No.:
Ref No.:CD 7673 955 279

Nominal displacement: 18.0ml/r
Maximus pressure: 130bar
Highest rotational speed: 500-3200r/min
Controlled flow rate: 20.0L/min
Fuel feed hole: M26 × 1.5
Fuel discharge hole: M18 × 1.5-6H
Direction of rotation: Right



OEM No.:
Ref No.:ZF 7674 955 343

Nominal displacement: 19.0ml/r
Maximus pressure: 165bar
Highest rotational speed: 500-3200r/min
Controlled flow rate: 18.0L/min
Fuel feed hole: 1(1/16)-12UNF
Fuel discharge hole: 3/4-16UNF
Direction of rotation: Right



OEM No.:
Ref No.:ZF 7674 955 343

Nominal displacement: 21.0ml/r
Maximus pressure: 165bar
Highest rotational speed: 500-3200r/min
Controlled flow rate: 16.0L/min
Fuel feed hole: 1(1/16)-12UN
Fuel discharge hole: 3/4-16UNF
Direction of rotation: Left



OEM No.:
Ref No.:TJG145157

Nominal displacement: 19.0ml/r
Maximus pressure: 000bar
Highest rotational speed: 500-3200r/min
Controlled flow rate: 16.0L/min
Fuel feed hole: Φ 21
Fuel discharge hole: 3/4-16UNF-2A
Direction of rotation: Right



OEM No.:
Ref No.:100 1181

Nominal displacement: 25.0ml/r
Maximus pressure: 165bar
Highest rotational speed: 500-3600r/min
Controlled flow rate: 25.0L/min
Fuel feed hole: 1(1/16)-12UN-2B
Fuel discharge hole: 3/4-12UNF-2B
Direction of rotation: Left



OEM No.:DINA 226H050040
Ref No.:LUK 542 0191 10

Nominal displacement: 21.0ml/r
Maximus pressure: 160bar
Highest rotational speed: 500-3600r/min
Controlled flow rate: 14.0L/min
Fuel feed hole: 1(5/16)-12UN
Fuel discharge hole: 3/4-16UNF
Direction of rotation: Left



OEM No.:7674 955 343
Ref No.:

Nominal displacement: 19.0ml/r
Maximus pressure: 165bar
Highest rotational speed: 500-3200r/min
Controlled flow rate: 18.0L/min
Fuel feed hole: 1(1/16)-12UN
Fuel discharge hole: 3/4-16UNF
Direction of rotation: Left



OEM No.:
Ref No.: 7674955343(different shaft and gear)

Nominal displacement: 19.0ml/r
Maximus pressure: 000bar
Highest rotational speed: 500-3200r/min
Controlled flow rate: 16.0L/min
Fuel feed hole: Φ 21
Fuel discharge hole: 3/4-16UNF-2A
Direction of rotation: Right



OEM No.:
Ref No.:LUK 542 0065 10

Nominal displacement: 17.5ml/r
Maximus pressure: 150bar
Highest rotational speed: 500-3600r/min
Controlled flow rate: 15.0L/min
Fuel feed hole: 1(1/16)-12UN-2B
Fuel discharge hole: 3/4-12UNF-2B
Direction of rotation: Right



OEM No.:
Ref No.:LUK 542 0065 10

Nominal displacement: 17.5ml/r
Maximus pressure: 150bar
Highest rotational speed: 500-3600r/min
Controlled flow rate: 19.0L/min
Fuel feed hole: 1(1/16)-12UN-2B
Fuel discharge hole: 3/4-12UNF-2B
Direction of rotation: Right



OEM No.:7674 9755 913
Ref No.:

Nominal displacement: 19.0ml/r
Maximus pressure: 130bar
Highest rotational speed: 500-3200r/min
Controlled flow rate: 18.0L/min
Fuel feed hole: Φ 21
Fuel discharge hole: 3/4-16UNF-2A
Direction of rotation: Right



OEM No.:2108204
Ref No.:LUK 52 0359 10

Nominal displacement: 25.0ml/r
Maximus pressure: 150bar
Highest rotational speed: 500-3600r/min
Controlled flow rate: 19.0L/min
Fuel feed hole: 1(1/16)-12UN
Fuel discharge hole: 3/4-16UNF
Direction of rotation: Left



OEM No.:
Ref No.:LUK 542 0195 10

Nominal displacement: 21.0ml/r
Maximus pressure: 163bar
Highest rotational speed: 500-3600r/min
Controlled flow rate: 16.0L/min
Fuel feed hole: M26 x 1.5-6H
Fuel discharge hole: M18 x 1.5-6H
Direction of rotation: Right



OEM No.:
Ref No.:

Nominal displacement: 17.5ml/r
Maximus pressure: 150bar
Highest rotational speed: 500-3600r/min
Controlled flow rate: 19.0L/min
Fuel feed hole: 1(5/16)-12UN-2B
Fuel discharge hole: 3/4-16UNF-2B
Direction of rotation: Left



OEM No.:International 1663 204 C91
Ref No.:LUK 52 0130 10

Nominal displacement: 17.5ml/r
Maximus pressure: 150bar
Highest rotational speed: 500-3600r/min
Controlled flow rate: 19.0L/min
Fuel feed hole: 1(5/16)-12UN
Fuel discharge hole: 3/4-16UN
Direction of rotation: Right



OEM No.:International 168 1047 C91
Ref No.:LUK 52 0239 10

Nominal displacement: 17.5ml/r
Maximus pressure: 120bar
Highest rotational speed: 500-3600r/min
Controlled flow rate: 14.0L/min
Fuel feed hole: 1(5/16)-12UN
Fuel discharge hole: 3/4-16UNF
Direction of rotation: Right



OEM No.:
Ref No.:

Nominal displacement: 17.5ml/r
Maximus pressure: 150bar
Highest rotational speed: 500-3600r/min
Controlled flow rate: 15.0L/min
Fuel feed hole: 1(5/16)-12UN-2B
Fuel discharge hole: 3/4-16UNF-2B
Direction of rotation: Left



OEM No.:DINA 22H050080
Ref No.:LUK 542 0172 10

Nominal displacement: 21.0ml/r
Maximus pressure: 150bar
Highest rotational speed: 500-3600r/min
Controlled flow rate: 15.0L/min
Fuel feed hole: 1(1/16)-12UN
Fuel discharge hole: 3/4-16UNF
Direction of rotation: Left



OEM No.:KENWORTH 2106438 2106749
Ref No.:LUK 542 0248 10

Nominal displacement: 21.0ml/r
Maximus pressure: 150bar
Highest rotational speed: 500-3600r/min
Controlled flow rate: 22.5L/min
Fuel feed hole: 1(5/16)-12UN
Fuel discharge hole: 3/4-16UNF
Direction of rotation: Right



OEM No.:
Ref No.:542 0169 10 3936350

Nominal displacement: 21.0ml/r
Maximus pressure: 150bar
Highest rotational speed: 500-3600r/min
Controlled flow rate: 19.0L/min
Fuel feed hole: 1(1/16)-12UN-2B
Fuel discharge hole: 3/4-16UNF-2B
Direction of rotation: Left



OEM No.:DINA 168 2625 C91
Ref No.:LUK 542 0176 10

Nominal displacement: 21.0ml/r
Maximus pressure: 150bar
Highest rotational speed: 500-3600r/min
Controlled flow rate: 14.0L/min
Fuel feed hole: 1(5/16)-12UN
Fuel discharge hole: 3/4-16UNF
Direction of rotation: Left



OEM No.:
Ref No.:

Nominal displacement: 21.0ml/r
Maximus pressure: 150bar
Highest rotational speed: 500-3600r/min
Controlled flow rate: 14.0L/min
Fuel feed hole: 1(1/16)-12UN-2B
Fuel discharge hole: 3/4-16UNF
Direction of rotation: Right



OEM No.:International 3538860 C91
Ref No.:LUK 542 0267 10

Nominal displacement: 25.0ml/r
Maximus pressure: 165bar
Highest rotational speed: 500-3600r/min
Controlled flow rate: 25.0L/min
Fuel feed hole: 1(1/16)-12UN
Fuel discharge hole: 3/4-16UNF
Direction of rotation: Right



OEM No.:
Ref No.:LUK 542 0130 10

Nominal displacement: 25.0ml/r
Maximus pressure: 165bar
Highest rotational speed: 500-3600r/min
Controlled flow rate: 25.0L/min
Fuel feed hole: 1(5/16)-12UN
Fuel discharge hole: 3/4-16UNF
Direction of rotation: Right



OEM No.:
Ref No.:

Nominal displacement: 25.0ml/r
Maximus pressure: 163bar
Highest rotational speed: 500-3600r/min
Controlled flow rate: 23.0L/min
Fuel feed hole: 1(5/16)-12UN-2B
Fuel discharge hole: 3/4-16UNF-2B
Direction of rotation: Left



OEM No.:
Ref No.:LUK 532 0260 10

Nominal displacement: 25.0ml/r
Maximus pressure: 150bar
Highest rotational speed: 500-3600r/min
Controlled flow rate: 16.0L/min
Fuel feed hole: 1(1/16)-12UN-2B
Fuel discharge hole: 3/4-16UNF
Direction of rotation: Right



OEM No.:
Ref No.:ZF 7685 955 301

Nominal displacement: 17.0ml/r
Maximus pressure: 150bar
Highest rotational speed: 500-3600r/min
Controlled flow rate: 16.0L/min
Fuel feed hole: M27 × 1.5-6H
Fuel discharge hole: M18 × 1.5-6H
Direction of rotation: Left



OEM No.:
Ref No.:EV 221615L101

Nominal displacement: 23.0ml/r
Maximus pressure: 145bar
Highest rotational speed: 500-3600r/min
Controlled flow rate: 16.0L/min
Fuel feed hole: 1(1/16)-12UN
Fuel discharge hole: 3/4-16UNF
Direction of rotation: Left



OEM NO.:F1HT 3A 674AA
Ref No.:ZF 7677 955 180

Nominal displacement: 34.0ml/r
Maximus pressure: 180bar
Highest rotational speed: 500-3500r/min
Controlled flow rate: 24.0L/min
Fuel feed hole: 1(1/16)-12UN
Fuel discharge hole: 3/4-16UNF
Direction of rotation: Right



OEM NO.:F1HT 3A 674EA
Ref No.:ZF 7677 955 181

Nominal displacement: 34.0ml/r
Maximus pressure: 180bar
Highest rotational speed: 500-3500r/min
Controlled flow rate: 24.0L/min
Fuel feed hole: 1(1/16)-12UN
Fuel discharge hole: 3/4-16UNF
Direction of rotation: Left



OEM No.:
Ref No.:EV 221615R101

Nominal displacement: 23.0ml/r
Maximus pressure: 145bar
Highest rotational speed: 500-3600r/min
Controlled flow rate: 16.0L/min
Fuel feed hole: 1(1/16)-12UN
Fuel discharge hole: 3/4-16UNF
Direction of rotation: Right



OEM No.:
Ref No.:EV221618L 10101S

Nominal displacement: 23.0ml/r
Maximus pressure: 185bar
Highest rotational speed: 500-3600r/min
Controlled flow rate: 16.0L/min
Fuel feed hole: 1(1/16)-12UN-2B
Fuel discharge hole: 3/4-16UNF-2B
Direction of rotation: Left



OEM No.:
Ref No.:V20F1P9P38C6G20

Nominal displacement: 29.7ml/r
Maximus pressure: 140bar
Highest rotational speed: 500-3200r/min
Controlled flow rate: 22.5L/min
Fuel feed hole: NPT1(1/4)
Fuel discharge hole: 3/4-16UNF
Direction of rotation: Right



OEM No.:
Ref No.:V20F1P9P38C6G

Nominal displacement: 29.7ml/r
Maximus pressure: 120bar
Highest rotational speed: 500-3200r/min
Controlled flow rate: 22.5L/min
Fuel feed hole: NPT1(1/4)
Fuel discharge hole: 3/4-16UNF
Direction of rotation: Right



OEM No.:
Ref No.:EV221618R 10101S

Nominal displacement: 23.0ml/r
Maximus pressure: 185bar
Highest rotational speed:500-3600r/min
Controlled flow rate: 16.0L/min
Fuel feed hole: 1(1/16)-12UN-2B
Fuel discharge hole: 3/4-16UNF-2B
Direction of rotation: Right



OEM No.:
Ref No.:

Nominal displacement: 25.0ml/r
Maximus pressure: 150bar
Highest rotational speed: 500-3600r/min
Controlled flow rate: 16.0L/min
Fuel feed hole: 1(1/16)-12UN-2B
Fuel discharge hole: 3/4-16UNF-2B
Direction of rotation: Left



OEM No.:VICKERS
Ref No.:V20F1P11P38D6H11

Nominal displacement: 36.4ml/r
Maximus pressure: 137.6bar
Highest rotational speed:500-3200r/min
Controlled flow rate: 22.7L/min
Fuel feed hole: NPT1(1/4)
Fuel discharge hole: 3/4-16UNF-2B
Direction of rotation: Right



OEM No.:VICKERS
Ref No.:PQN 001740

Nominal displacement: 36.4ml/r
Maximus pressure: 150bar
Highest rotational speed: 500-3200r/min
Controlled flow rate: 20.0L/min
Fuel feed hole: NPT1(1/4)
Fuel discharge hole: 3/4-16UNF-2B
Direction of rotation: Left



OEM No.:
Ref No.:PEV1816-15L10

Nominal displacement: 18.0ml/r
Maximus pressure: 150bar
Highest rotational speed: 500-3600r/min
Controlled flow rate: 16.0L/min
Fuel feed hole: 1(1/16)-12UN-2B
Fuel discharge hole: 3/4-16UNF-2B
Direction of rotation: Left



OEM No.:
Ref No.:PEV2516-15R101

Nominal displacement: 25.0ml/r
Maximus pressure: 150bar
Highest rotational speed: 500-3600r/min
Controlled flow rate: 16.0L/min
Fuel feed hole: 1(1/16)-12UN-2B
Fuel discharge hole: 3/4-16UNF-2B
Direction of rotation: Right



OEM No.:VICKERS
Ref No.:PQN 001742

Nominal displacement: 36.4ml/r
Maximus pressure: 120bar
Highest rotational speed: 500-3200r/min
Controlled flow rate: 18.0L/min
Fuel feed hole: NPT1(1/4)
Fuel discharge hole: 3/4-16UNF-2B
Direction of rotation: Right



OEM No.:VICKERS
Ref No.:PQN 001748

Nominal displacement: 29.7ml/r
Maximus pressure: 150bar
Highest rotational speed: 500-3200r/min
Controlled flow rate: 16.0L/min
Fuel feed hole: NPT1(1/4)
Fuel discharge hole: 3/4-16UNF-2B
Direction of rotation: Right



OEM No.:
Ref No.:PEV1816-15R10

Nominal displacement: 18.0ml/r
Maximus pressure: 150bar
Highest rotational speed: 500-3600r/min
Controlled flow rate: 16.0L/min
Fuel feed hole: 1(1/16)-12UN-2B
Fuel discharge hole: 3/4-16UNF-2B
Direction of rotation: Right



OEM No.:
Ref No.:PEV2520-13R101

Nominal displacement: 25.0ml/r
Maximus pressure: 130bar
Highest rotational speed: 500-3600r/min
Controlled flow rate: 20.0L/min
Fuel feed hole: 1(1/16)-12UN-2B
Fuel discharge hole: 3/4-16UNF-2B
Direction of rotation: Right



OEM No.:VICKERS
Ref No.:V20F1P11P38B6H22

Nominal displacement: 42.4ml/r
Maximus pressure: 155bar
Highest rotational speed: 500-2400r/min
Controlled flow rate: 19.0L/min
Fuel feed hole: NPT1(1/4)
Fuel discharge hole: 3/4-16UNF-2B
Direction of rotation: Right



OEM No.:
Ref No.:

Nominal displacement: 25.0ml/r
Maximus pressure: 150bar
Highest rotational speed: 500-2700r/min
Controlled flow rate: 16.0L/min
Fuel feed hole: 1(1/16)-12UN
Fuel discharge hole: 3/4-16UNF-2B
Direction of rotation: Right



OEM No.:
Ref No.:PEV2824-15R101

Nominal displacement: 28.0ml/r
Maximus pressure: 150bar
Highest rotational speed: 500-3600r/min
Controlled flow rate: 24.0L/min
Fuel feed hole: 1(1/16)-12UN-2B
Fuel discharge hole: 3/4-16UNF-2B
Direction of rotation: Right



OEM No.:
Ref No.:

Nominal displacement: 25.0ml/r
Maximus pressure: 150bar
Highest rotational speed: 500-2700r/min
Controlled flow rate: 16.0L/min
Fuel feed hole: 1(1/16)-12UN
Fuel discharge hole: 3/4-16UNF-2B
Direction of rotation: Left



OEM No.:
Ref No.:

Nominal displacement: 25.0ml/r
Maximus pressure: 150bar
Highest rotational speed: 500-2700r/min
Controlled flow rate: 16.0L/min
Fuel feed hole: 1(1/16)-12UN
Fuel discharge hole: 3/4-16UNF-2B
Direction of rotation: Right



OEM No.:
Ref No.:

Nominal displacement: 25.0ml/r
Maximus pressure: 150bar
Highest rotational speed: 500-2700r/min
Controlled flow rate: 16.0L/min
Fuel feed hole: 1(1/16)-12UN
Fuel discharge hole: 3/4-16UNF-2B
Direction of rotation: Left



OEM No.:International 1686 649 C91
Ref No.:LUK 542 0273 10

Nominal displacement: 21.0ml/r
Maximus pressure: 165bar
Highest rotational speed: 500-3600r/min
Controlled flow rate: 16.0L/min
Fuel feed hole: 1(1/16)-12UN
Fuel discharge hole: 3/4-16UNF-2B
Direction of rotation: Left



OEM No.:ZF 7683 955 114
Ref No.:FIAT(DUCATO)

Nominal displacement: 15.0ml/r
Maximus pressure: 100bar
Highest rotational speed: 500-3600r/min
Controlled flow rate: 7.0L/min
Fuel feed hole: M18 x 1.5
Fuel discharge hole: M14 x 1.5
Direction of rotation: Left



OEM NO.:INTERNATION 2005337 C91
Ref No.:LUK 5420 0320 10

Nominal displacement: 21.0ml/r
Maximus pressure: 165bar
Highest rotational speed: 500-3600r/min
Controlled flow rate: 15.0L/min
Fuel feed hole: 1(1/16)-12UN
Fuel discharge hole: 3/4-16UNF
Direction of rotation: Right



OEM No.:VOLKS WAGEN
Ref No.:ZF 7673 975 816

Nominal displacement: 17.5ml/r
Maximus pressure: 000bar
Highest rotational speed: 500-5000r/min
Controlled flow rate: 8.0L/min
Fuel feed hole: Φ21
Fuel discharge hole: 3/4-16UNF-2A
Direction of rotation: Left



OEM No.:VOLKS WAGEN
Ref No.:ZF 7674 975 960

Nominal displacement: 21.0ml/r
Maximus pressure: 000bar
Highest rotational speed: 500-3600r/min
Controlled flow rate: 15.0L/min
Fuel feed hole: Φ21
Fuel discharge hole: 3/4-16UNF-2A
Direction of rotation: Right



OEM No.:
Ref No.:

Nominal displacement: 21.0ml/r
Maximus pressure: 140bar
Highest rotational speed: 500-3600r/min
Controlled flow rate: 16.0L/min
Fuel feed hole: 1(1/16)-12UN-2B
Fuel discharge hole: 3/4-16UNF-2B
Direction of rotation: Right



OEM No.:
Ref No.:

Nominal displacement: 21.0ml/r
Maximus pressure: 140bar
Highest rotational speed: 500-3600r/min
Controlled flow rate: 16.0L/min
Fuel feed hole: 1(1/16)-12UN-2B
Fuel discharge hole: 3/4-16UNF-2B
Direction of rotation: Left



OEM No.:
Ref No.:V10NF1S6T38C5G

Nominal displacement: 20.0ml/r
Maximus pressure: 110bar
Highest rotational speed: 500-3200r/min
Controlled flow rate: 20.0L/min
Fuel feed hole: 1(5/16)-16UN
Fuel discharge hole: 3/4-16UNF
Direction of rotation: Right



OEM No.:
Ref No.:PQN 001783

Nominal displacement: 16.0ml/r
Maximus pressure: 140bar
Highest rotational speed: 500-3600r/min
Controlled flow rate: 16.0L/min
Fuel feed hole: 1(5/16)-12UN-2B
Fuel discharge hole: 3/4-16UNF-2B
Direction of rotation: Right



OEM No.:
Ref No.:3514595C91

Nominal displacement: 25.0ml/r
Maximus pressure: 163bar
Highest rotational speed: 500-3600r/min
Controlled flow rate: 17.0L/min
Fuel feed hole: 1(1/16)-12UN-2B
Fuel discharge hole: 3/4-16UNF-2B
Direction of rotation: Right



OEM No.:
Ref No.:PS282815R11401

Nominal displacement: 28.0ml/r
Maximus pressure: 150bar
Highest rotational speed: 500-3600r/min
Controlled flow rate: 26.0L/min
Fuel feed hole: 1(1/16)-12UN-2B
Fuel discharge hole: 3/4-16UNF-2B
Direction of rotation: Right



OEM No.:
Ref No.:V10F1P6P38C6G

Nominal displacement: 20.0ml/r
Maximus pressure: 110bar
Highest rotational speed: 500-3200r/min
Controlled flow rate: 22.5L/min
Fuel feed hole: NPT1
Fuel discharge hole: 3/4-16UNF
Direction of rotation: Right



OEM No.:
Ref No.:V10F1P7P38D5G20

Nominal displacement: 22.8ml/r
Maximus pressure: 120bar
Highest rotational speed: 500-3600r/min
Controlled flow rate: 20.0L/min
Fuel feed hole: NPT1
Fuel discharge hole: 3/4-16UNF
Direction of rotation: Right



OEM No.:TRW PS
Ref No.:QG-PSR114

Nominal displacement: 25.0ml/r
Maximus pressure: 150bar
Highest rotational speed: 500-3600r/min
Controlled flow rate: 16.0L/min
Fuel feed hole: 1(1/16)-12UN-2B
Fuel discharge hole: 3/4-16UNF-2B
Direction of rotation: Right



OEM No.:
Ref No.:

Nominal displacement: 25.0ml/r
Maximus pressure: 150bar
Highest rotational speed: 500-3600r/min
Controlled flow rate: 16.0L/min
Fuel feed hole: 1(1/16)-12UN-2B
Fuel discharge hole: 3/4-16UNF-2B
Direction of rotation: Right



OEM No.:
Ref No.:VICKERS

Nominal displacement: 22.8ml/r
Maximus pressure: 110bar
Highest rotational speed: 500-3600r/min
Controlled flow rate: 19.0L/min
Fuel feed hole: NPT1/2-14;NPT1
Fuel discharge hole: 3/4-16UNF-2B
Direction of rotation: Right



OEM No.:
Ref No.:VICKERS

Nominal displacement: 22.8ml/r
Maximus pressure: 85bar
Highest rotational speed: 500-3600r/min
Controlled flow rate: 19.0L/min
Fuel feed hole: NPT1.;NPT1/2-14
Fuel discharge hole: 3/4-16UNF-2B
Direction of rotation: Right



OEM No.:
Ref No.:

Nominal displacement: 25.0ml/r
Maximus pressure: 140bar
Highest rotational speed: 500-3600r/min
Controlled flow rate: 23.0L/min
Fuel feed hole: 1(1/16)-12UN-2B
Fuel discharge hole: 3/4-16UNF-2B
Direction of rotation: Left



OEM No.:
Ref No.:

Nominal displacement: 25.0ml/r
Maximus pressure: 150bar
Highest rotational speed: 500-3600r/min
Controlled flow rate: 16.0L/min
Fuel feed hole: 1(1/16)-12UN-2B
Fuel discharge hole: 3/4-16UNF-2B
Direction of rotation: Left



OEM No.:
Ref No.:VICKERS

Nominal displacement: 19.4ml/r
Maximus pressure: 150bar
Highest rotational speed: 500-3600r/min
Controlled flow rate: 18.0L/min
Fuel feed hole: NPT1.;NPT1/2-14
Fuel discharge hole: 3/4-16UNF-2B
Direction of rotation: Right



OEM No.:PQN 001729
Ref No.:VICKERS

Nominal displacement: 22.8ml/r
Maximus pressure: 170bar
Highest rotational speed: 500-3600r/min
Controlled flow rate: 16.0L/min
Fuel feed hole: NPT1.;NPT1/2-14
Fuel discharge hole: 3/4-16UNF-2B
Direction of rotation: Left



OEM No.:
Ref No.:

Nominal displacement: 25.0ml/r
Maximus pressure: 140bar
Highest rotational speed: 500-3600r/min
Controlled flow rate: 16.0L/min
Fuel feed hole: 1(1/16)-12UN-2B
Fuel discharge hole: 3/4-16UNF-2B
Direction of rotation: Right



OEM No.:
Ref No.:

Nominal displacement: 25.0ml/r
Maximus pressure: 140bar
Highest rotational speed: 500-3600r/min
Controlled flow rate: 16.0L/min
Fuel feed hole: 1(1/16)-12UN-2B
Fuel discharge hole: 3/4-16UNF-2B
Direction of rotation: Left



OEM No.:
Ref No.:

Nominal displacement: 28.0ml/r
Maximus pressure: 160bar
Highest rotational speed: 500-3600r/min
Controlled flow rate: 28.0L/min
Fuel feed hole: 1(1/16)-12UN-2B
Fuel discharge hole: 3/4-16UNF-2B
Direction of rotation: Right



OEM No.:
Ref No.:PS2516-13R102

Nominal displacement: 25.0ml/r
Maximus pressure: 130bar
Highest rotational speed: 500-3600r/min
Controlled flow rate: 16.0L/min
Fuel feed hole: 1(1/16)-12UN-2B
Fuel discharge hole: 3/4-16UNF-2B
Direction of rotation: Right



MANUFACTORY REF No.: PS362815L105
OEM REF No.:

Nominal displacement: 36.0ml/r
Maximum pressure: 150bar
Highest rotational speed: 500-3600r/min
Controlled flow rate: 28.0L/min
Fuel feed hole: 1 1/16-12UN-2B
Fuel discharge hole: 3/4-16UNF-2B
Direction of rotation: Left



MANUFACTORY REF No.: PS362815L105
OEM REF No.:

Nominal displacement: 36.0ml/r
Maximum pressure: 150bar
Highest rotational speed: 500-3600r/min
Controlled flow rate: 28.0L/min
Fuel feed hole: 1 1/16-12UN-2B
Fuel discharge hole: 3/4-16UNF-2B
Direction of rotation: Left



OEM No.:
Ref No.:PS2820-15R102

Nominal displacement: 28.0ml/r
Maximus pressure: 150bar
Highest rotational speed: 500-3600r/min
Controlled flow rate: 20.0L/min
Fuel feed hole: 1(1/16)-12UN-2B
Fuel discharge hole: 3/4-16UNF-2B
Direction of rotation: Right



OEM No.:
Ref No.:PS251615L/105

Nominal displacement: 25.0ml/r
Maximus pressure: 150bar
Highest rotational speed: 500-3600r/min
Controlled flow rate: 16.0L/min
Fuel feed hole: 1(1/16)-12UN-2B
Fuel discharge hole: 3/4-16UNF-2B
Direction of rotation: Left



MANUFACTORY REF No.: EV221614L30407
OEM REF No.: A6854600280

Nominal displacement: 23.0ml/r
Maximum pressure: 150bar
Highest rotational speed: 500-3600r/min
Controlled flow rate: 16.0L/min
Fuel feed hole: 1 1/16-12UN-2B
Fuel discharge hole: 3/4-16UNF-2B
Direction of rotation: Left



MANUFACTORY REF No.: PS362815L102
OEM REF No.:

Nominal displacement: 36.0ml/r
Maximum pressure: 150bar
Highest rotational speed: 500-3600r/min
Controlled flow rate: 28.0L/min
Fuel feed hole: 1 1/16-12UN-2B
Fuel discharge hole: 3/4-16UNF-2B
Direction of rotation: Left



OEM No.:
Ref No.:QG-PSR103

Nominal displacement: 25.0ml/r
Maximus pressure: 150bar
Highest rotational speed: 500-3600r/min
Controlled flow rate: 15.0L/min
Fuel feed hole: 1(1/16)-12UN-2B
Fuel discharge hole: 3/4-16UNF-2B
Direction of rotation: Right



OEM No.:TRW PS
Ref No.:QG-PSL103

Nominal displacement: 25.0ml/r
Maximus pressure: 150bar
Highest rotational speed: 500-3600r/min
Controlled flow rate: 20.0L/min
Fuel feed hole: 1(1/16)-12UN-2B
Fuel discharge hole: 3/4-16UNF-2B
Direction of rotation: Left



MANUFACTORY REF No.: PS362815R102
OEM REF No.:

Nominal displacement: 36.0ml/r
Maximum pressure: 150bar
Highest rotational speed: 500-3600r/min
Controlled flow rate: 28.0L/min
Fuel feed hole: 1 1/16-12UN-2B
Fuel discharge hole: 3/4-16UNF-2B
Direction of rotation: Right



MANUFACTORY REF No.: QG-PSL103-36
OEM REF No.: PS362815L103

Nominal displacement: 36.0ml/r
Maximum pressure: 150bar
Highest rotational speed: 3600r/min
Controlled flow rate: 26.0L/min
Fuel feed hole: 1 1/16-12UN-2B
Fuel discharge hole: 3/4-16UNF-2B
Direction of rotation: Left



OEM No.:
Ref No.:PS282815L103

Nominal displacement: 28.0ml/r
Maximus pressure: 150bar
Highest rotational speed: 500-3600r/min
Controlled flow rate: 28.0L/min
Fuel feed hole: 1(1/16)-12UN-2B
Fuel discharge hole: 3/4-16UNF-2B
Direction of rotation: Left



OEM No.:TRW PS
Ref No.:QG-PSL116

Nominal displacement: 22.0ml/r
Maximus pressure: 150bar
Highest rotational speed: 500-3600r/min
Controlled flow rate: 16.0L/min
Fuel feed hole: 1(1/16)-12UN-2B
Fuel discharge hole: 3/4-16UNF-2B
Direction of rotation: Left



MANUFACTORY REF No.: PS362418R103
OEM REF No.:

Nominal displacement: 36.0ml/r
Maximum pressure: 180bar
Highest rotational speed: 500-3600r/min
Controlled flow rate: 24.0L/min
Fuel feed hole: 1 1/16-12UN-2B
Fuel discharge hole: 3/4-16UNF-2B
Direction of rotation: Right



MANUFACTORY REF No.: QG-PSL113-36
OEM REF No.: PS362815L113

Nominal displacement: 36.0ml/r
Maximum pressure: 150bar
Highest rotational speed: 500-3600r/min
Controlled flow rate: 26.0L/min
Fuel feed hole: 1 1/16-12UN-2B
Fuel discharge hole: 3/4-16UNF-2B
Direction of rotation: Left



OEM No.:
Ref No.:PS282815L116

Nominal displacement: 28.0ml/r
Maximus pressure: 150bar
Highest rotational speed: 500-3600r/min
Controlled flow rate: 26.0L/min
Fuel feed hole: 1(1/16)-12UN-2B
Fuel discharge hole: 3/4-16UNF-2B
Direction of rotation: Left



OEM No.:
Ref No.:PS3224-15R103

Nominal displacement: 32.0ml/r
Maximus pressure: 150bar
Highest rotational speed: 500-3600r/min
Controlled flow rate: 24.0L/min
Fuel feed hole: 1(1/16)-12UN-2B
Fuel discharge hole: 3/4-16UNF-2B
Direction of rotation: Right



OEM NO.:FORD DEVFATIH
Ref No.:ZF 7674 955 245

Nominal displacement: 21.0ml/r
Maximus Pressure: 130bar
Highest rotational speed: 500-3600r/min
Controlled flow rate: 16.0L/min
Fuel feed hole: M26 x 1.5
Fuel discharge hole: M16 x 1.5
Direction of rotation: Right



OEM No.:
Ref No.:

Nominal displacement: 21.0ml/r
Maximus Pressure: 150bar
Highest rotational speed: 500-3600r/min
Controlled flow rate: 16.0L/min
Fuel feed hole: M26 x 1.5
Fuel discharge hole: M18 x 1.5
Direction of rotation: Right



MANUFACTORY REF No.: PS362415R105
OEM REF No.:

Nominal displacement: 36.0ml/r
Maximum pressure: 150bar
Highest rotational speed: 500-3600r/min
Controlled flow rate: 24.0L/min
Fuel feed hole: 1 1/16-12UN-2B
Fuel discharge hole: 3/4-16UNF-2B
Direction of rotation: Right



OEM No.:
Ref No.:PS3224-15R103

Nominal displacement: 32.0ml/r
Maximus pressure: 150bar
Highest rotational speed: 500-3600r/min
Controlled flow rate: 24.0L/min
Fuel feed hole: 1(1/16)-12UN-2B
Fuel discharge hole: 3/4-16UNF-2B
Direction of rotation: Right



OEM No.:FORD BMCPRO
Ref No.:ZF 7674 955 306

Nominal displacement: 21.0ml/r
Maximus pressure: 000bar
Highest rotational speed: 500-3600r/min
Controlled flow rate: 16.0L/min
Fuel feed hole: M26 x 1.5
Fuel discharge hole: M16 x 1.5
Direction of rotation: Right



OEM No.:FORD CARGO
Ref No.:ZF 7673 955 580

Nominal displacement: 17.5ml/r
Maximus pressure: 130bar
Highest rotational speed: 500-3500r/min
Controlled flow rate: 18.0L/min
Fuel feed hole: M26 x 1.5
Fuel discharge hole: M16 x 1.5
Direction of rotation: Right



OEM No.: FORD AS950
Ref No.: ZF 7673 955 702

Nominal displacement: 17.5ml/r
Maximum pressure: 100bar
Highest rotational speed: 500-3500r/min
Controlled flow rate: 18.0L/min
Fuel feed hole: M26 x 1.5
Fuel discharge hole: M18 x 1.5
Direction of rotation: Left



OEM No.:
Ref No.:

Nominal displacement: 18.0ml/r
Maximum pressure: 000bar
Highest rotational speed: 500-3500r/min
Controlled flow rate: 16.0L/min
Fuel feed hole: M26 x 1.5
Fuel discharge hole: M18 x 1.5
Direction of rotation: Right



MANUFACTORY REF No.: 3824643C91
OEM REF No.:

Nominal displacement: 25.0ml/r
Maximum pressure: 185bar
Highest rotational speed: 500-5000r/min
Controlled flow rate: 16.0L/min
Fuel feed hole: 1 1/16-12UN-2B
Fuel discharge hole: 3/4-16UNF-2B
Direction of rotation: Right



MANUFACTORY REF No.: 3836058C91
OEM REF No.:

Nominal displacement: 21.0ml/r
Maximum pressure: 185bar
Highest rotational speed: 500-5000r/min
Controlled flow rate: 16.0L/min
Fuel feed hole: 1 1/16-12UN
Fuel discharge hole: 3/4-16UNF
Direction of rotation: Right



OEM No.:
Ref No.:

Nominal displacement: 18.0ml/r
Maximum pressure: 150bar
Highest rotational speed: 500-3500r/min
Controlled flow rate: 16.0L/min
Fuel feed hole: M26 x 1.5
Fuel discharge hole: M18 x 1.5
Direction of rotation: Left



OEM No.:
Ref No.:

Nominal displacement: 18.0ml/r
Maximum pressure: 000bar
Highest rotational speed: 500-3500r/min
Controlled flow rate: 21.0L/min
Fuel feed hole: M26 x 1.5
Fuel discharge hole: M18 x 1.5
Direction of rotation: Left



MANUFACTORY REF No.: LH2115909
OEM REF No.:

Nominal displacement: 28.0ml/r
Maximum pressure: 145bar
Highest rotational speed: 500-5000r/min
Controlled flow rate: 22.0L/min
Fuel feed hole: 1 1/16-12UN-2B
Fuel discharge hole: 3/4-16UNF-2B
Direction of rotation: Right



MANUFACTORY REF No.: LH2115523
OEM REF No.:

Nominal displacement: 28.0ml/r
Maximum pressure: 165bar
Highest rotational speed: 500-5000r/min
Controlled flow rate: 22.0L/min
Fuel feed hole: 1 1/16-12UN-2B
Fuel discharge hole: 3/4-16UNF-2B
Direction of rotation: Right



OEM No.: FORD BMC162
Ref No.: ZF 7673 955 572

Nominal displacement: 17.5ml/r
Maximum pressure: 130bar
Highest rotational speed: 500-3500r/min
Controlled flow rate: 18.0L/min
Fuel feed hole: M26 x 1.5
Fuel discharge hole: M16 x 1.5
Direction of rotation: Right



OEM No.: CUMMINS 6CT
Ref No.: 3406Z07-010-A

Nominal displacement: 16.0ml/r
Maximum pressure: 140bar
Highest rotational speed: 500-3600r/min
Controlled flow rate: 18.0L/min
Fuel feed hole: M22 x 1.5
Fuel discharge hole: M20 x 1.5
Direction of rotation: Right



MANUFACTORY REF No.: 2008180C93
OEM REF No.:

Nominal displacement: 21.0ml/r
Maximum pressure: 163bar
Highest rotational speed: 500-3600r/min
Controlled flow rate: 16.0L/min
Fuel feed hole: 1 1/16-12UN-2B
Fuel discharge hole: 3/4-16UNF-2B
Direction of rotation: Right



MANUFACTORY REF No.: 465.LUK.08
OEM REF No.:

Nominal displacement: 17.0ml/r
Maximum pressure: 160bar
Highest rotational speed: 500-3600r/min
Controlled flow rate: 16.0L/min
Fuel feed hole: 1 1/16-12UN-2B
Fuel discharge hole: 3/4-16UNF-2B
Direction of rotation: Left



OEM No.: CUMMINS 6BTAA
Ref No.: 3406Z07-010-A

Nominal displacement: 16.00ml/r
Maximum pressure: 140bar
Highest rotational speed: 500-3600r/min
Controlled flow rate: 18.0L/min
Fuel feed hole: M30 x 1.5
Fuel discharge hole: M20 x 1.5
Direction of rotation: Right



OEM No.: 6126 3003 0087
Ref No.: 91102H

Nominal displacement: 8.5ml/r
Maximum pressure: 70bar
Highest rotational speed: 500-7000r/min
Controlled flow rate: 8.0L/min
Fuel feed hole: Φ17.3
Fuel discharge hole: M16 x 1.5
Direction of rotation: Left



MANUFACTORY REF No.: 3623641C94
OEM REF No.:

Nominal displacement: 24.0ml/r
Maximum pressure: 185bar
Highest rotational speed: 500-5000r/min
Controlled flow rate: 16.0L/min
Fuel feed hole: 1 1/16-12UN
Fuel discharge hole: 3/4-16UNF
Direction of rotation: Left



MANUFACTORY REF No.: 3829278C91
OEM REF No.:

Nominal displacement: 21.0ml/r
Maximum pressure: 165bar
Highest rotational speed: 500-3600r/min
Controlled flow rate: 16.0L/min
Fuel feed hole: 1 1/16-12UN-2B
Fuel discharge hole: 3/4-16UNF-2B
Direction of rotation: Left



OEM No.: Sprinter
Ref No.: ZF 7691 955 910

Nominal displacement: 8.5ml/r
Maximum pressure: 100bar
Highest rotational speed: 500-7000r/min
Controlled flow rate: 8.0L/min
Fuel feed hole: Φ17.3
Fuel discharge hole: M16 x 1.5
Direction of rotation: Left



OEM No.:
Ref No.: ZF 7691 955 921

Nominal displacement: 8.5ml/r
Maximum pressure: 100bar
Highest rotational speed: 500-7000r/min
Controlled flow rate: 9.0L/min
Fuel feed hole: Φ17.3
Fuel discharge hole: M16 x 1.5
Direction of rotation: Left



MANUFACTORY REF No.:
OEM REF No.:

Nominal displacement: 21.0ml/r
Maximum pressure: 165bar
Highest rotational speed: 500-3600r/min
Controlled flow rate: 16.0L/min
Fuel feed hole: 1 1/16-12UN-2B
Fuel discharge hole: 3/4-16UNF-2B
Direction of rotation: Left



MANUFACTORY REF No.: VT73 515971
OEM REF No.:

Nominal displacement: 21.0ml/r
Maximum pressure: 160bar
Highest rotational speed: 500-3600r/min
Controlled flow rate: 16.0L/min
Fuel feed hole: 1 1/16-12UN-2B
Fuel discharge hole: 3/4-16UNF-2B
Direction of rotation: Left



MANUFACTORY REF No.: 3820856C91
OEM REF No.:

Nominal displacement: 28.0ml/r
Maximum pressure: 165bar
Highest rotational speed: 500-5000r/min
Controlled flow rate: 22.0L/min
Fuel feed hole: 1-1/16-12UN
Fuel discharge hole: 3/4-16UNF
Direction of rotation: Left



MANUFACTORY REF No.: LH2114080
OEM REF No.:

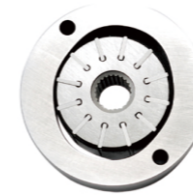
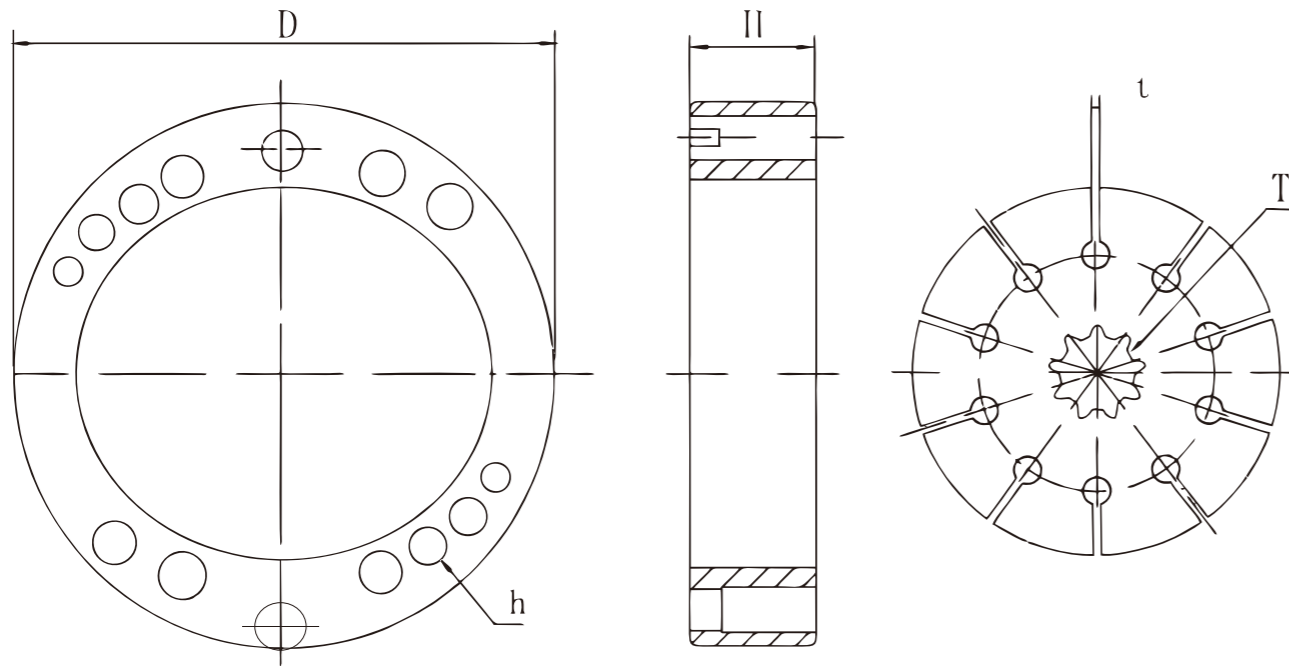
Nominal displacement: 25.0ml/r
Maximum pressure: 185bar
Highest rotational speed: 500-5000r/min
Controlled flow rate: 19.2L/min
Fuel feed hole: 1-1/16-12UN-2B
Fuel discharge hole: 3/4-16UNF-2B
Direction of rotation: Left



MANUFACTORY REF No.: PS221612R32601S
OEM REF No.:

Nominal displacement: 23.0ml/r
Maximum pressure: 120bar
Highest rotational speed: 500-3600r/min
Controlled flow rate: 16.0L/min
Fuel feed hole: 1 1/16-12UN-2B
Fuel discharge hole: 3/4-16UNF-2B
Direction of rotation: Right





RART NO.:
133
DIMENSION:
64.5×22×24T×2H



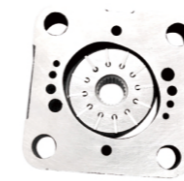
RART NO.:
149
DIMENSION:
75.5×22×14T×8H



RART NO.:
106A/130
ADIMENSION:
77×26×19T×2H



RART NO.:
V20
DIMENSION:
22×30T



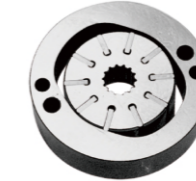
RART NO.:
V10
DIMENSION:
27×23T



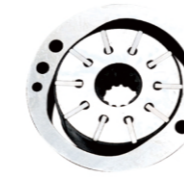
RART NO.:
91
DIMENSION:
75.5×22×24T×8H



RART NO.:
44306-1030
DIMENSION:
68×16×10T×10H



RART NO.:
7839136/180-2
DIMENSION:
64.5×16.5×14T×4H



RART NO.:
470-10059
DIMENSION:
54×16×14T×6H



RART NO.:
44306-1100
DIMENSION:
68×20×18T×12H



RART NO.:
44306-1060
DIMENSION:
64.5×16×14T×3H



RART NO.:
5688105
DIMENSION:
64.7×21.5×14T×4H



RART NO.:
116/132A
ZF7673 955 190
DIMENSION:
64.5×19.5×14T×1H
64.5×19.5×14T×1H



RART NO.:
7684-974-704/241
34333-00300/258
DIMENSION:
64.5×23.5×14T×5H
64.5×23.5×14T×5H



RART NO.:
144306-1160K
44306-1160
DIMENSION:
64×16×18T×6H
64×16×18T×6H



RART NO.:
167-2
ZF7673 955 116
211
DIMENSION:
64.5×19.5×14T×2H
64.5×19.5×14T×2H
64.5×19.5×14T×2H



RART NO.:
44306-1150
44306-1150A
44306-1200
DIMENSION:
64×20×18T×12H
64×20×18T×12H
64×20×18T×12H



RART NO.:
14714-99018
14714-99019A
DIMENSION:
64×28×10T×8H
64×30×10T×8H



RARTNO.:
1ZF7684 955 198/93A
ZF7685 955 180/407
107V/421
151R/394

DIMENSION:
64.7 × 23.5 × 14T × 3H
64.7 × 23.5 × 14T × 3H
64.7 × 23.5 × 14T × 3H
64.7 × 23.5 × 14T × 3H



RARTNO.:
ZF54200 ZF73/336
ZYB-16525R/334A VT74B/248
VT77/269 542000110 542001310

DIMENSION:
63.5 × 23.43 × 23T × 10H 63.4 × 23.43 × 23T × 10H
63.4 × 23.43 × 23T × 10H 63.4 × 23.5 × 23T × 10H
63.5 × 23.43 × 23T × 10H 63.4 × 23.5 × 23T × 10H
63.4 × 23.5 × 23T × 10H



RART NO.:
1063R

DIMENSION:



RART NO.:
1063R

DIMENSION:



RART NO.:
475-10050 475-10052 475-10055
475-10056 475-10057 475-10058
475-10063 475-10065

DIMENSION:
65 × 12 × 10T × 10H 65 × 14 × 10T × 10H
65 × 15.6 × 10T × 10H 65 × 16 × 10T × 10H
65 × 18 × 10T × 10H 65 × 21 × 10T × 10H
65 × 24 × 10T × 10H 65 × 30 × 10T × 10H



RART NO.:
44306-1170 14714-99100
14714-99020 14714-99019
14714-99017

DIMENSION:
64 × 20 × 18T × 8H 64 × 23 × 18T × 8H
64 × 32 × 18T × 8H 64 × 30 × 18T × 8H
64 × 28 × 18T × 8H



RART NO.:
475R

DIMENSION:



RART NO.:
475L

DIMENSION:



RART NO.:
14714R

DIMENSION:



RART NO.:
14714L

DIMENSION:



RART NO.:
211

DIMENSION:



RART NO.:
211

DIMENSION:



RART NO.:
160R

DIMENSION:



RART NO.:
160R

DIMENSION:



RART NO.:
74B

DIMENSION:



RART NO.:
74B

DIMENSION:



RART NO.:
167-2

DIMENSION:



RART NO.:
190

DIMENSION:



RART NO.:
190

DIMENSION:



RART NO.:
54200

DIMENSION: